



# PMIX Standards Organization Schema Changes

JANUARY 25, 2021

# History of the Architecture



- The PMIX National Architecture is a nationwide framework designed to enable standards-based sharing of information between Prescription Drug Monitoring Program (PDMP) organizations and their stakeholders.
- The Bureau of Justice Assistance facilitated a committee to create an architecture for the exchange of information between state PDMPs
- Piloted in 2011 and first states LIVE in 2012

# PMIX Architecture Summary



- **Common Data Elements:**
  - Though we may not call them the same things or collect all of the same data, we agree on what we share and what we call it when we are sharing.
- **Common Format:**
  - We use agreed upon schemas to exchange so that data elements are identified and located at an agreed upon place in the XML exchange.
- **Security:**
  - Data is secure from the requestor to the responder and vice versa. The intermediaries do not have access to the confidential data
- **State Choice and Flexibility**

# PMIX Standards Organization



- BJA convened a group of representatives with the goal of creating a state ‘owned’ committee to govern the architecture in early 2014. The group was facilitated by TTAC.
  - AL, CA, FL, ME, MT, OH, OK, VA, WA, WI
- Create a representative governance structure for the architecture.
- Discuss opportunities and concerns related to interstate data sharing.

# Guiding Principles



Guiding Principles in order to foster prescription drug information sharing across all Federal, State, Tribal, and approved third party entities in accordance with the PMIX National Architecture.

- Protect state's full rights and control of Data Ownership.
- Promote the adoption of security standards that protect the confidentiality, integrity, and availability of the data in transit and at rest.
- Promote fair, open and transparent competition in the selection of IT Solution providers that provide the best value products or services to PDMP participating states, while maintaining the public's trust and fulfilling public policy objectives.
- Promote uniformity in the selection of a limited set of approved common data standards.

# Purpose of the PMIX Standards Organization



- The purpose of the PMIX Standards Organization is to support the sharing of PDMP Data among PDMP organizations and their stakeholders by establishing and maintaining the PMIX National Architecture and related guidelines, policies and standards to minimize the cost and complexity of sharing PDMP data across organizational, vendor, geographic and operational boundaries; enable secure, trusted exchanges of PDMP data and promote consistency among PDMPs.

# Understanding the Architecture



- Since inception, PMIX has been based on the National Information Exchange Model.
- What is NIEM?
  - NIEM is used by the majority of federal agencies and all 50 states to some degree.
  - A XML based information exchange framework that defines a catalogue of common data elements, schemas and meta data to share information
  - For more information on NIEM, go to [NIEM.gov](http://NIEM.gov)
- What is XML?
  - XML is a language that defines data in a textual format that is readable by humans and machines

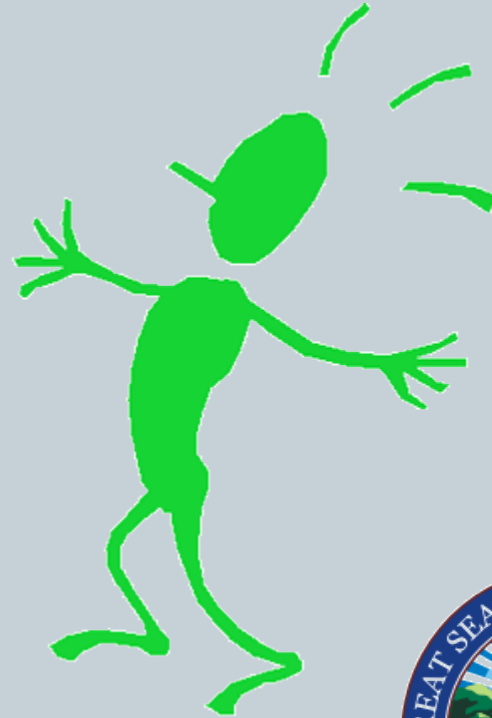
# Understanding the Architecture



- **What are the data elements?**
  - Combination of commonly defined data from the NIEM catalogue (NC) and data specific to PDMPs (PMP)
  - Started with the data used by pharmacies to submit prescription records (ASAP)
  - Mapped to NC data elements where available and created PMP fields where necessary
- **What is an XML schema?**
  - It defines the structure of a particular XML ‘document’.
- **What is the metadata?**
  - Data about the data, it defines the content.



# How does it all work together?



# How does it work together?

## Data Elements

1000 COMPANY NAME  
**EXPENSE REPORT**

To: EXPENSE ACCOUNT OF:  
For Period From To:

CONSIDERED	DATE	FARE	HOTEL	MEALS	TAXIS	PHONE	TOTAL
							TOTAL

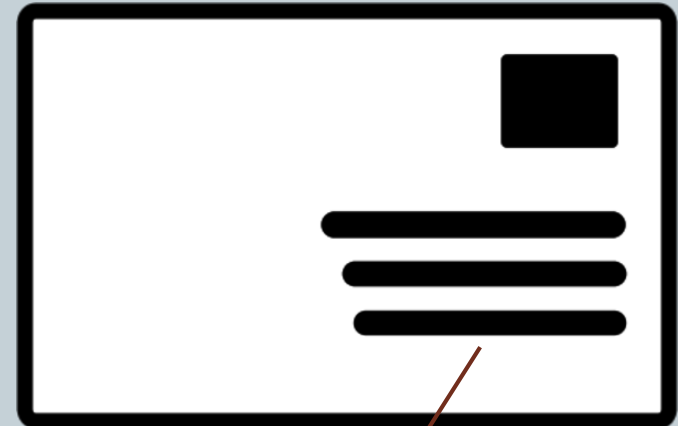
RENTAL	DATE	RENTAL	GAS	MILEAGE	PARKING	TOTAL
						TOTAL

OTHER	DATE	DESCRIPTION	AMOUNT
			TOTAL

Previous Total	DATE	CAR
Current Week		TRAVEL
Total to Date		MISCELLANEOUS
Signature of Claimant:		GRAND TOTAL
Approved by:		Attach Receipts

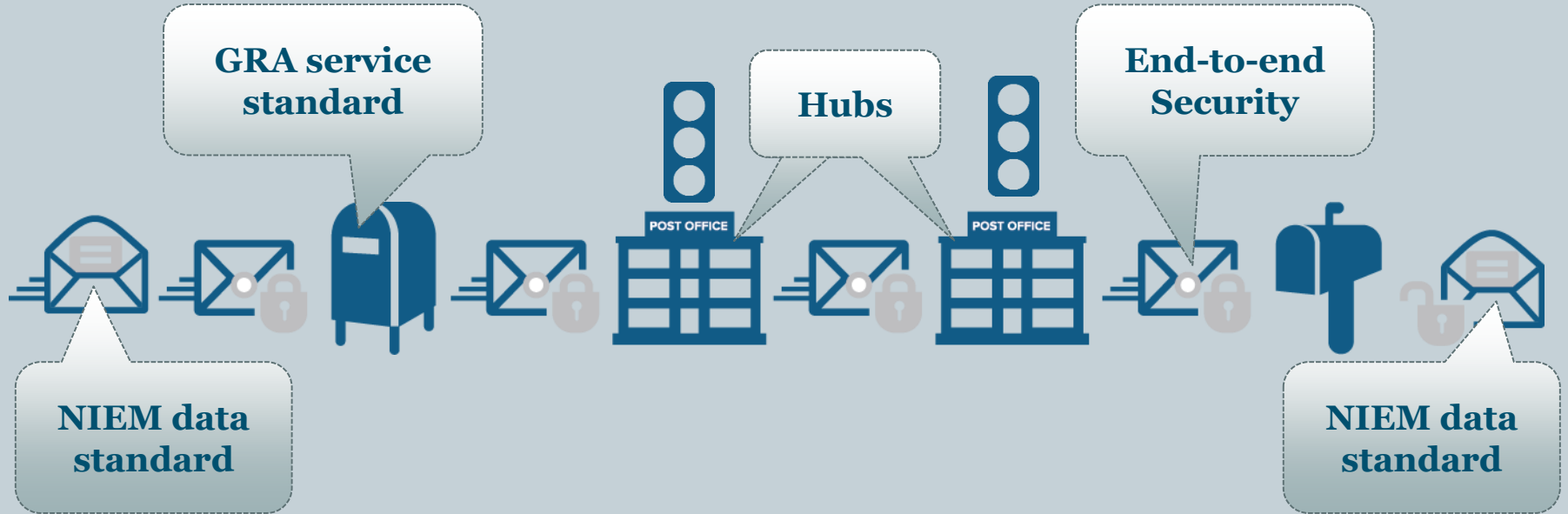
## Data Elements

## Schema



## Metadata

# How does it work?



# Current Standards



- **Actively Used Schemas**
  - Request Schemas – Sends patient specific data to a state
    - ✦ Comprehensive Request schema
  - Response Schema – Return Rx data to requestor
    - ✦ Prescription Report PMP Exchange schema
  - MetaData Schema – Sends Requestor and routing information
  - Response Status Schema – Communicates a response when no data is sent

# Comprehensive Request Sample



```
<?xml version="1.0" encoding="UTF-8"?>
<!--Sample XML file generated by XMLSpy v2011 (x64) (http://www.altova.com)-->
- <pmix:PMPRequest xmlns:pmp="http://xml.ijis.org/niem/2.0/extension" xmlns:nc="http://niem.gov/niem/niem-core/2.0" xmlns:s="http://niem.gov/niem/structures/2.0" xmlns:pmix="http://xml.ijis.org/niem/2.0/"
xsi:schemaLocation="http://xml.ijis.org/niem/2.0/ ../schema/information/exchange/PMIX_NIEM_2.0_Request_Schema.xsd" xmlns:xsi="http://www.w3.org/2001/XMLSchema-instance">
- <pmp:RequestPrescriptionDateRange>
  <pmp:RequestPrescriptionDateRangeBegin>1967-08-13</pmp:RequestPrescriptionDateRangeBegin>
  <pmp:RequestPrescriptionDateRangeEnd>1967-08-13</pmp:RequestPrescriptionDateRangeEnd>
</pmp:RequestPrescriptionDateRange>
- <pmp:RequestPatient>
- <nc:PersonBirthDate>
  <nc:Date>1967-08-13</nc:Date>
</nc:PersonBirthDate>
- <nc:PersonName>
  <nc:PersonNamePrefixText>String</nc:PersonNamePrefixText>
  <nc:PersonGivenName>String</nc:PersonGivenName>
  <nc:PersonMiddleName>String</nc:PersonMiddleName>
  <nc:PersonSurName>String</nc:PersonSurName>
  <nc:PersonNameSuffixText>String</nc:PersonNameSuffixText>
  <nc:PersonFullName>String</nc:PersonFullName>
</nc:PersonName>
  <nc:PersonSexCode>U</nc:PersonSexCode>
- <nc:PersonSSNIdentification>
  <nc:IdentificationID>String</nc:IdentificationID>
  <nc:IdentificationJurisdictionText>String</nc:IdentificationJurisdictionText>
</nc:PersonSSNIdentification>
- <pmp:PersonPrimaryContactInformation>
- <nc:ContactTelephoneNumber>
  - <nc:FullTelephoneNumber>
    <nc:TelephoneNumberFullID>String</nc:TelephoneNumberFullID>
  </nc:FullTelephoneNumber>
</nc:ContactTelephoneNumber>
- <nc:ContactMailingAddress>
  - <nc:StructuredAddress>
    - <nc:LocationStreet>
      <nc:StreetFullText>String</nc:StreetFullText>
    </nc:LocationStreet>
    <nc:LocationCityName>String</nc:LocationCityName>
    <nc:LocationStateUSPostalServiceCode>NV</nc:LocationStateUSPostalServiceCode>
    <nc:LocationPostalCode>String</nc:LocationPostalCode>
    <nc:LocationPostalExtensionCode>String</nc:LocationPostalExtensionCode>
  </nc:StructuredAddress>
</nc:ContactMailingAddress>
</pmp:PersonPrimaryContactInformation>
- <pmp:PersonStateIssuedIdentifier>
  <nc:IdentificationID>String</nc:IdentificationID>
  <nc:IdentificationJurisdictionText>String</nc:IdentificationJurisdictionText>
</pmp:PersonStateIssuedIdentifier>
  <pmp:SpeciesCode>01</pmp:SpeciesCode>
  <pmp:PatientLocationCode>01</pmp:PatientLocationCode>
  <pmp:PatientNameOfAnimalText>String</pmp:PatientNameOfAnimalText>
</pmp:RequestPatient>
</pmix:PMPRequest>
```

# Proposed Changes to the PMIX Architecture



- **Comprehensive Request Schema**
  - Remove the Prefix field
    - ✦ nc:PersonNamePrefixText
  - Remove the Full Name field
    - ✦ nc:PersonFullName

# Current Comprehensive Request Schema

```
<?xml version="1.0" encoding="UTF-8"?>
<!--Sample XML file generated by XMLSpy v2011 (x64) (http://www.altova.com)-->
- <pmix:PMPRequest xmlns:pmp="http://xml.ijis.org/niem/2.0/extension" xmlns:nc="http://niem.gov/niem/niem-core/2011/niem-core" xsi:schemaLocation="http://xml.ijis.org/niem/2.0/ ../schema/information/exchange/PMIX_NIEM_2.0_Request" >
  - <pmp:RequestPrescriptionDateRange>
    <pmp:RequestPrescriptionDateRangeBegin>1967-08-13</pmp:RequestPrescriptionDateRangeBegin>
    <pmp:RequestPrescriptionDateRangeEnd>1967-08-13</pmp:RequestPrescriptionDateRangeEnd>
  </pmp:RequestPrescriptionDateRange>
  - <pmp:RequestPatient>
    - <nc:PersonBirthDate>
      <nc:Date>1967-08-13</nc:Date>
    </nc:PersonBirthDate>
    - <nc:PersonName>
      <nc:PersonNamePrefixText>String</nc:PersonNamePrefixText>
      <nc:PersonGivenName>String</nc:PersonGivenName>
      <nc:PersonMiddleName>String</nc:PersonMiddleName>
      <nc:PersonSurName>String</nc:PersonSurName>
      <nc:PersonNameSuffixText>String</nc:PersonNameSuffixText>
      <nc:PersonFullName>String</nc:PersonFullName>
    </nc:PersonName>
    <nc:PersonSexCode>U</nc:PersonSexCode>
    - <nc:PersonSSNIentification>
      <nc:IdentificationID>String</nc:IdentificationID>
      <nc:IdentificationJurisdictionText>String</nc:IdentificationJurisdictionText>
    </nc:PersonSSNIentification>
    - <pmp:PersonPrimaryContactInformation>
      - <nc:ContactTelephoneNumber>
        - <nc:FullTelephoneNumber>
          <nc:TelephoneNumberFullID>String</nc:TelephoneNumberFullID>
        </nc:FullTelephoneNumber>
      </nc:ContactTelephoneNumber>
      - <nc:ContactMailingAddress>
        - <nc:StructuredAddress>
          - <nc:LocationStreet>
            <nc:StreetFullText>String</nc:StreetFullText>
          </nc:LocationStreet>
          <nc:LocationCityName>String</nc:LocationCityName>
          <nc:LocationStateUSPostalServiceCode>NV</nc:LocationStateUSPostalServiceCode>
          <nc:LocationPostalCode>String</nc:LocationPostalCode>
          <nc:LocationPostalExtensionCode>String</nc:LocationPostalExtensionCode>
        </nc:StructuredAddress>
      </nc:ContactMailingAddress>
    </pmp:PersonPrimaryContactInformation>
    - <pmp:PersonStateIssuedIdentifier>
      <nc:IdentificationID>String</nc:IdentificationID>
      <nc:IdentificationJurisdictionText>String</nc:IdentificationJurisdictionText>
    </pmp:PersonStateIssuedIdentifier>
    <pmp:SpeciesCode>01</pmp:SpeciesCode>
    <pmp:PatientLocationCode>01</pmp:PatientLocationCode>
    <pmp:PatientNameOfAnimalText>String</pmp:PatientNameOfAnimalText>
  </pmp:RequestPatient>
</pmix:PMPRequest>
```

# Future Comprehensive Request Schema

```
<?xml version="1.0" encoding="UTF-8"?>
<!-- Sample XML file generated by XMLSpy v2011 (x64) (http://www.altova.com) -->
<pmix:PMRequest xmlns:xsi="http://www.w3.org/2001/XMLSchema-instance" xmlns:pmix="http://pmixpmp.org/niem/4.0/"
  xmlns:release="http://release.niem.gov/niem/structures/4.0/"
  xmlns:core="http://release.niem.gov/niem/niem-core/4.0/"
  xmlns:ixdm="http://release.niem.gov/niem/domains/ixdm/6.2/"
  xmlns:extension="http://pmixpmp.org/niem/4.0/extension">
  <pmix:RequestPrescriptionDateRange>
    <pmix:RequestPrescriptionDateRangeBegin>1967-08-13</pmix:RequestPrescriptionDateRangeBegin>
    <pmix:RequestPrescriptionDateRangeEnd>1967-08-13</pmix:RequestPrescriptionDateRangeEnd>
  </pmix:RequestPrescriptionDateRange>
  <pmix:RequestPatient>
    <nc:PersonBirthDate>
      <nc:Date>1967-08-13</nc:Date>
    </nc:PersonBirthDate>
    <nc:PersonName>
      <nc:PersonGivenName>String</nc:PersonGivenName>
      <nc:PersonMiddleName>String</nc:PersonMiddleName>
      <nc:PersonSurName>String</nc:PersonSurName>
      <nc:PersonNameSuffixText>String</nc:PersonNameSuffixText>
    </nc:PersonName>
    <nc:PersonSexCode>U</nc:PersonSexCode>
    <nc:PersonSSNIdentification>
      <nc:IdentificationID>String</nc:IdentificationID>
      <nc:IdentificationJurisdiction>
        <nc:JurisdictionText>String</nc:JurisdictionText>
      </nc:IdentificationJurisdiction>
    </nc:PersonSSNIdentification>
    <pmix:PersonPrimaryContactInformation>
      <nc:ContactTelephoneNumber>
        <nc:FullTelephoneNumber>
          <nc:TelephoneNumberFullID>String</nc:TelephoneNumberFullID>
        </nc:FullTelephoneNumber>
      </nc:ContactTelephoneNumber>
      <nc:ContactMailingAddress>
        <nc:LocationStreet>
          <nc:StreetFullText>String</nc:StreetFullText>
        </nc:LocationStreet>
        <nc:LocationCityName>String</nc:LocationCityName>
        <nc:LocationState>{<nc:LocationStateUSPostalServiceCode>NV</nc:LocationStateUSPostalServiceCode>}
        </nc:LocationState>
        <nc:LocationPostalCode>String</nc:LocationPostalCode>
        <nc:LocationPostalExtensionCode>String</nc:LocationPostalExtensionCode>
      </nc:ContactMailingAddress>
    </pmix:PersonPrimaryContactInformation>
    <pmix:PersonStateIssuedIdentifier>
      <nc:IdentificationID>String</nc:IdentificationID>
      <nc:IdentificationJurisdiction>
        <nc:JurisdictionText>String</nc:JurisdictionText>
      </nc:IdentificationJurisdiction>
    </pmix:PersonStateIssuedIdentifier>
    <pmix:SpeciesCode>01</pmix:SpeciesCode>
    <pmix:PatientLocationCode>01</pmix:PatientLocationCode>
    <pmix:PatientNameOfAnimalText>String</pmix:PatientNameOfAnimalText>
  </pmix:RequestPatient>
</pmix:PMRequest>
```





# Proposed Changes to the PMIX Architecture



- Prescription Report PMP Exchange schema
  - Remove the Prefix field
    - ✦ nc:PersonNamePrefixText
  - Remove the Full Name field
    - ✦ nc:PersonFullName
  - Add fields available in ASAP 4.2B
    - ✦ **PrescribedQuantity (A):** Allows the exchange of the quantity prescribed if collected.
    - ✦ **RxSIGText (B):** Allows the Prescription instructions to be shared.
    - ✦ **ICD-10DiagnosticCodeText (C):** Allows state to share ICD 10 codes associated with the Prescription Record.
    - ✦ **XDEAIndicator (D):** True = DEA number is an XDEA number, False = DEA is not an XDEA number
    - ✦ **Added New Code 06 to the code table of TransmissionFormOfRxOriginCode (E):** Add code per ASAP latest version.
    - ✦ **Added PersonVendorIdentifier to nc:IdentificationType:** Identifies a person using and ID number provided by a vendor and the vendor which has jurisdiction over the id.
    - ✦ **OpioidTreatmentCategoryCode (F):** Allows the exchange of a code to identify the reason for the opioid prescription.
  - pmp:PatientAlertCategoryCode: This is a code list below that identifies the type of alert the may be contained in a text field. This allows states to choose whether to use the information in the text field.
  - pmp:PatientAlertDescriptionText: This field contains the actual text per the sending state

# Current Prescription Report Schema

```
<?xml version="1.0" encoding="UTF-8"?>
<!--Sample XML file generated by XMLSpy v2011 (x64) (http://www.altova.com)-->
- <pmix:PMPPrescriptionReport xmlns:pmp="http://xml.ijis.org/niem/2.0/extension" xmlns:nc="http://niem.gov/niem/niem-core/2.0" xmlns:s="http://niem.gov/niem/structures/2.0"
  xmlns:pmix="http://xml.ijis.org/niem/2.0/" xsi:schemaLocation="http://xml.ijis.org/niem/2.0/ ../schema/information/exchange/PMIX_NIEM_2.0_PMP_Prescription_Report.xsd"
  xmlns:xsi="http://www.w3.org/2001/XMLSchema-instance">
  - <pmp:RequestResponsePrescriptionReport>
    - <pmp:PMPDocumentAugmentation>
      <pmp:DocumentPublicationTime>14:20:00.0Z</pmp:DocumentPublicationTime>
    </pmp:PMPDocumentAugmentation>
    <pmp:ReportExecutionDate>1967-08-13</pmp:ReportExecutionDate>
    <pmp:ReportExecutionTime>14:20:00.0Z</pmp:ReportExecutionTime>
  - <pmp:ReportDateRange>
    <pmp:ReportDateRangeBegin>1967-08-13</pmp:ReportDateRangeBegin>
    <pmp:ReportDateRangeEnd>1967-08-13</pmp:ReportDateRangeEnd>
  </pmp:ReportDateRange>
  - <pmp:Prescription>
    - <pmp:Dispenser>
      <nc:OrganizationDoingBusinessAsName>String</nc:OrganizationDoingBusinessAsName>
    - <nc:OrganizationLocation>
      - <nc:LocationAddress>
        - <nc:StructuredAddress>
          - <nc:LocationStreet>
            <nc:StreetFullText>String</nc:StreetFullText>
          </nc:LocationStreet>
          <nc:LocationCityName>String</nc:LocationCityName>
          <nc:LocationStateUSPostalServiceCode>OH</nc:LocationStateUSPostalServiceCode>
          <nc:LocationPostalCode>String</nc:LocationPostalCode>
          <nc:LocationPostalExtensionCode>String</nc:LocationPostalExtensionCode>
        </nc:StructuredAddress>
      </nc:LocationAddress>
    </nc:OrganizationLocation>
    <nc:OrganizationName>String</nc:OrganizationName>
  - <nc:OrganizationPrimaryContactInformation>
    - <nc:ContactTelephoneNumber>
      - <nc:FullTelephoneNumber>
        <nc:TelephoneNumberFullID>String</nc:TelephoneNumberFullID>
      </nc:FullTelephoneNumber>
    </nc:ContactTelephoneNumber>
  - <nc:ContactEntity>
    - <nc:EntityOrganization>
      <nc:OrganizationDoingBusinessAsName>String</nc:OrganizationDoingBusinessAsName>
    - <nc:OrganizationLocation>
      - <nc:LocationAddress>
        - <nc:StructuredAddress>
          - <nc:LocationStreet>
            <nc:StreetFullText>String</nc:StreetFullText>
          </nc:LocationStreet>
          <nc:LocationCityName>String</nc:LocationCityName>
          <nc:LocationStateUSPostalServiceCode>MI</nc:LocationStateUSPostalServiceCode>
          <nc:LocationPostalCode>String</nc:LocationPostalCode>
          <nc:LocationPostalExtensionCode>String</nc:LocationPostalExtensionCode>
        </nc:StructuredAddress>
      </nc:LocationAddress>
    </nc:EntityOrganization>
  </nc:ContactEntity>
  </nc:OrganizationPrimaryContactInformation>
  </pmp:Dispenser>
  </pmp:Prescription>
  </pmp:RequestResponsePrescriptionReport>
  </pmp:PMPPrescriptionReport>
</pmp:RequestResponsePrescriptionReport>
```

# Future Prescription Report Schema

```
<?xml version="1.0" encoding="UTF-8"?> <!--Sample XML file generated by XMLSpy v2011 (x64) (http://www.altova.com)-->
<pmix:PMPPrescriptionReport xmlns:xsi="http://www.w3.org/2001/XMLSchema-instance"
xsi:schemaLocation="http://pmixpmp.org/niem/4.0/
././schema/information/exchange/PMIX_NIEM_4.0_PMP_Prescription_Report.xsd" xmlns:pmix="http://pmixpmp.org/niem/4.0/"
xmlns:s="http://release.niem.gov/niem/structures/4.0/" xmlns:nc="http://release.niem.gov/niem/niem-core/4.0/"
xmlns:j="http://release.niem.gov/niem/domains/ixdm/6.2/" xmlns:pmp="http://pmixpmp.org/niem/4.0/extension">
  <pmp:RequestResponsePrescriptionReport>
    <pmp:PMPDocumentAugmentation>
      <pmp:DocumentPublicationTime>14:20:00.0Z</pmp:DocumentPublicationTime>
    </pmp:PMPDocumentAugmentation>
    <pmp:ReportExecutionDate>1967-08-13</pmp:ReportExecutionDate>
    <pmp:ReportExecutionTime>14:20:00.0Z</pmp:ReportExecutionTime>
    <pmp:ReportDateRange>
      <pmp:ReportDateRangeBegin>1967-08-13</pmp:ReportDateRangeBegin>
      <pmp:ReportDateRangeEnd>1967-08-13</pmp:ReportDateRangeEnd>
    </pmp:ReportDateRange>
    <pmp:Prescription>
      <pmp:Dispenser>
        <nc:OrganizationDoingBusinessAsName>String</nc:OrganizationDoingBusinessAsName>
        <nc:OrganizationLocation>
          <nc:Address>
            <nc:LocationStreet>
              <nc:StreetFullText>String</nc:StreetFullText>
            </nc:LocationStreet>
            <nc:LocationCityName>String</nc:LocationCityName>
            <nc:LocationState>
              <nc:LocationStateUSPostalServiceCode>OH</nc:LocationStateUSPostalServiceCode>
            </nc:LocationState>
            <nc:LocationPostalCode>String</nc:LocationPostalCode>
            <nc:LocationPostalExtensionCode>String</nc:LocationPostalExtensionCode>
          </nc:Address>
        </nc:OrganizationLocation>
        <nc:OrganizationName>String</nc:OrganizationName>
        <nc:OrganizationPrimaryContactInformation>
          <nc>ContactTelephoneNumber>
            <nc:FullTelephoneNumber>
              <nc:TelephoneNumberFullID>String</nc:TelephoneNumberFullID>
            </nc:FullTelephoneNumber>
          </nc>ContactTelephoneNumber>
          <nc>ContactEntity>
            <nc:EntityOrganization>
              <nc:OrganizationDoingBusinessAsName>String</nc:OrganizationDoingBusinessAsName>
              <nc:OrganizationLocation>
                <nc:Address>
                  <nc:LocationStreet>
                    <nc:StreetFullText>String</nc:StreetFullText>
                  </nc:LocationStreet>
                  <nc:LocationCityName>String</nc:LocationCityName>
                  <nc:LocationState>
                    <nc:LocationStateUSPostalServiceCode>MI</nc:LocationStateUSPostalServiceCode>
                  </nc:LocationState>
                  <nc:LocationPostalCode>String</nc:LocationPostalCode>
                  <nc:LocationPostalExtensionCode>String</nc:LocationPostalExtensionCode>
                </nc:Address>
              </nc:EntityOrganization>
            </nc>ContactEntity>
          </nc>ContactInformation>
        </nc:OrganizationPrimaryContactInformation>
      </pmp:Dispenser>
    </pmp:Prescription>
  </pmp:RequestResponsePrescriptionReport>
</pmix:PMPPrescriptionReport>
```

# Current Prescription Report Schema

```

    </nc:EntityOrganization>
  </nc:ContactEntity>
</nc:OrganizationPrimaryContactInformation>
- <pmp:NPIIdentifier>
  <nc:IdentificationID>String</nc:IdentificationID>
  <nc:IdentificationJurisdictionText>String</nc:IdentificationJurisdictionText>
</pmp:NPIIdentifier>
- <pmp:DEANumberIdentifier>
  <nc:IdentificationID>String</nc:IdentificationID>
  <nc:IdentificationJurisdictionText>String</nc:IdentificationJurisdictionText>
</pmp:DEANumberIdentifier>
- <pmp:StateLicenseIdentifier>
  <nc:IdentificationID>String</nc:IdentificationID>
  <nc:IdentificationJurisdictionText>String</nc:IdentificationJurisdictionText>
</pmp:StateLicenseIdentifier>
- <pmp:NCPDPIIdentifier>
  <nc:IdentificationID>String</nc:IdentificationID>
  <nc:IdentificationJurisdictionText>String</nc:IdentificationJurisdictionText>
</pmp:NCPDPIIdentifier>
  <pmp:ContactNameText>String</pmp:ContactNameText>
  <pmp:ChainSiteIDText>String</pmp:ChainSiteIDText>
</pmp:Dispenser>
<pmp:PrescriptionNumberText>String</pmp:PrescriptionNumberText>
<pmp:DrugRefillNumberCount>1</pmp:DrugRefillNumberCount>
- <pmp:PrescriptionFilledDate>
  <nc:Date>1967-08-13</nc:Date>
</pmp:PrescriptionFilledDate>
- <pmp:Patient>
  - <nc:PersonBirthDate>
    <nc:Date>1967-08-13</nc:Date>
  </nc:PersonBirthDate>
  - <nc:PersonName>
    <nc:PersonNamePrefixText>String</nc:PersonNamePrefixText>
    <nc:PersonGivenName>String</nc:PersonGivenName>
    <nc:PersonMiddleName>String</nc:PersonMiddleName>
    <nc:PersonSurName>String</nc:PersonSurName>
    <nc:PersonNameSuffixText>String</nc:PersonNameSuffixText>
    <nc:PersonFullName>String</nc:PersonFullName>
  </nc:PersonName>
  <nc:PersonSexCode>U</nc:PersonSexCode>
  - <nc:PersonSSNIentification>
    <nc:IdentificationID>String</nc:IdentificationID>
    <nc:IdentificationJurisdictionText>String</nc:IdentificationJurisdictionText>
  </nc:PersonSSNIentification>
  - <pmp:PersonPrimaryContactInformation>
    - <nc:ContactTelephoneNumber>
      - <nc:FullTelephoneNumber>
        <nc:TelephoneNumberFullID>String</nc:TelephoneNumberFullID>
      </nc:FullTelephoneNumber>
    </nc:ContactTelephoneNumber>
    - <nc:ContactMailingAddress>
      - <nc:StructuredAddress>
        - <nc:LocationStreet>
          <nc:StreetFullText>String</nc:StreetFullText>
        </nc:LocationStreet>

```

# Future Prescription Report Schema



- **XDEAIndicator (D):** True = DEA number is an XDEA number, False = DEA is not an XDEA number

```
<nc:IdentificationID>String</nc:IdentificationID>
<nc:IdentificationJurisdiction>
  <nc:JurisdictionText>String</nc:JurisdictionText>
</nc:IdentificationJurisdiction>
<pmp:XDEAIndicator>>false</pmp:XDEAIndicator>
</pmp:DEANumberIdentifier>
<pmp:StateLicenseIdentifier>
  <nc:IdentificationID>String</nc:IdentificationID>
  <nc:IdentificationJurisdiction>
    <nc:JurisdictionText>String</nc:JurisdictionText>
```



# Current Prescription Report Schema

```

    <nc:LocationCityName>String</nc:LocationCityName>
    <nc:LocationStateUSPostalServiceCode>NV</nc:LocationStateUSPostalServiceCode>
    <nc:LocationPostalCode>String</nc:LocationPostalCode>
    <nc:LocationPostalExtensionCode>String</nc:LocationPostalExtensionCode>
  </nc:StructuredAddress>
</nc:ContactMailingAddress>
</pmp:PersonPrimaryContactInformation>
- <pmp:PersonStateIssuedIdentifier>
  <nc:IdentificationID>String</nc:IdentificationID>
  <nc:IdentificationJurisdictionText>String</nc:IdentificationJurisdictionText>
</pmp:PersonStateIssuedIdentifier>
<pmp:SpeciesCode>01</pmp:SpeciesCode>
<pmp:PatientLocationCode>11</pmp:PatientLocationCode>
<pmp:PatientNameOfAnimalText>String</pmp:PatientNameOfAnimalText>
</pmp:Patient>
- <pmp:Prescriber>
  - <nc:PersonName>
    <nc:PersonNamePrefixText>String</nc:PersonNamePrefixText>
    <nc:PersonGivenName>String</nc:PersonGivenName>
    <nc:PersonMiddleName>String</nc:PersonMiddleName>
    <nc:PersonSurName>String</nc:PersonSurName>
    <nc:PersonNameSuffixText>String</nc:PersonNameSuffixText>
    <nc:PersonFullName>String</nc:PersonFullName>
  </nc:PersonName>
  - <pmp:PersonPrimaryContactInformation>
    - <nc:ContactTelephoneNumber>
      - <nc:FullTelephoneNumber>
        <nc:TelephoneNumberFullID>String</nc:TelephoneNumberFullID>
      </nc:FullTelephoneNumber>
    </nc:ContactTelephoneNumber>
    - <nc:ContactEntity>
      - <nc:EntityOrganization>
        <nc:OrganizationDoingBusinessAsName>String</nc:OrganizationDoingBusinessAsName>
      - <nc:OrganizationLocation>
        - <nc:LocationAddress>
          - <nc:StructuredAddress>
            - <nc:LocationStreet>
              <nc:StreetFullText>String</nc:StreetFullText>
            </nc:LocationStreet>
            <nc:LocationCityName>String</nc:LocationCityName>
            <nc:LocationStateUSPostalServiceCode>AE</nc:LocationStateUSPostalServiceCode>
            <nc:LocationPostalCode>String</nc:LocationPostalCode>
            <nc:LocationPostalExtensionCode>String</nc:LocationPostalExtensionCode>
          </nc:StructuredAddress>
          </nc:LocationAddress>
        </nc:OrganizationLocation>
        <nc:OrganizationName>String</nc:OrganizationName>
      </nc:EntityOrganization>
    </nc:ContactEntity>
  </pmp:PersonPrimaryContactInformation>
  - <pmp:NPIIdentifier>
    <nc:IdentificationID>String</nc:IdentificationID>
    <nc:IdentificationJurisdictionText>String</nc:IdentificationJurisdictionText>
  </pmp:NPIIdentifier>

```

# Future Prescription Response Schema



- ✦ **pmp:PatientAlertCategoryCode:** This is a code list below that identifies the type of alert the may be contained in a text field. This allows states to choose whether to use the information in the text field.
- ✦ **pmp:PatientAlertDescriptionText:** This field contains the actual text per the sending state

```
<pmp:SpeciesCode>01</pmp:SpeciesCode>  
<pmp:PatientLocationCode>11</pmp:PatientLocationCode>  
<pmp:PatientNameOfAnimalText>String</pmp:PatientNameOfAnimalText>  
<pmp:PatientAlert>  
  <pmp:PatientAlertDescriptionText>String</pmp:PatientAlertDescriptionText>  
  <pmp:PatientAlertCategoryCode>01</pmp:PatientAlertCategoryCode>  
</pmp:PatientAlert>
```

# Patient Alert Category Codes



- 01: Suspected non-fatal overdose alert
- 02: Suspected fatal overdose alert
- 03: Doctor/pharmacy shopping alert
- 04: Benzo and opiate overlapping prescription alert
- 05: MME alert (e.g. MMEs within certain range considered to be high risk)
- 06: Marijuana alert (e.g. participant in medical marijuana registry)
- 07: Prescribing practice alert (e.g. prescribing opioids more than 30 days, greater than 640 patients in month)
- 08: Dispensing practice alert (e.g. early refills, multiple same day)
- 09: Naloxone dispensing alert
- 10: Conviction alert (e.g. felony convictions)
- 11: Law Enforcement alert (e.g. stolen prescriptions)
- 12: Patient contract alert (e.g. lock-in programs, pain/treatment contracts)
- 99: Unspecified Alert (defined by the sending PDMP)



# Current Prescription Report Schema

```
- <pmp:DEANumberIdentifier>
  <nc:IdentificationID>String</nc:IdentificationID>
  <nc:IdentificationJurisdictionText>String</nc:IdentificationJurisdictionText>
</pmp:DEANumberIdentifier>
<pmp:PrescriberDEANumberSuffixText>String</pmp:PrescriberDEANumberSuffixText>
- <pmp:StateLicenseIdentifier>
  <nc:IdentificationID>String</nc:IdentificationID>
  <nc:IdentificationJurisdictionText>String</nc:IdentificationJurisdictionText>
</pmp:StateLicenseIdentifier>
</pmp:Prescriber>
- <pmp:PrescriptionWrittenDate>
  <nc:Date>1967-08-13</nc:Date>
</pmp:PrescriptionWrittenDate>
- <pmp:PrescriptionDrug>
  - <pmp:DrugUPNProductIdentifier>
    <nc:IdentificationID>String</nc:IdentificationID>
    <nc:IdentificationJurisdictionText>String</nc:IdentificationJurisdictionText>
  </pmp:DrugUPNProductIdentifier>
  <pmp:DrugProductNameText>String</pmp:DrugProductNameText>
  <pmp:DrugStrengthText>String</pmp:DrugStrengthText>
  <pmp:DrugUnitOfMeasureText>String</pmp:DrugUnitOfMeasureText>
  <pmp:DEAClassScheduleText>String</pmp:DEAClassScheduleText>
  - <pmp:CompoundDrugIngredient>
    <pmp:CompoundDrugIngredientSequenceNumber>1</pmp:CompoundDrugIngredientSequenceNumber>
    - <pmp:CompoundDrugIngredientNDCProductIdentifier>
      <nc:IdentificationID>String</nc:IdentificationID>
      <nc:IdentificationJurisdictionText>String</nc:IdentificationJurisdictionText>
    </pmp:CompoundDrugIngredientNDCProductIdentifier>
    <pmp:CompoundDrugIngredientProductNameText>String</pmp:CompoundDrugIngredientProductNameText>
    <pmp:CompoundDrugIngredientStrengthText>String</pmp:CompoundDrugIngredientStrengthText>
    <pmp:CompoundDrugIngredientDEAClassScheduleText>String</pmp:CompoundDrugIngredientDEAClassScheduleText>
    <pmp:IngredientQuantity>1.1</pmp:IngredientQuantity>
    <pmp:CompoundDrugIngredientDrugDosageUnitsCode>02</pmp:CompoundDrugIngredientDrugDosageUnitsCode>
  </pmp:CompoundDrugIngredient>
</pmp:PrescriptionDrug>
<pmp:RefillsAuthorizedCount>1</pmp:RefillsAuthorizedCount>
<pmp:DispensedQuantity>1.1</pmp:DispensedQuantity>
<pmp:DaysSupplyCount>1</pmp:DaysSupplyCount>
<pmp:DrugDosageUnitsCode>03</pmp:DrugDosageUnitsCode>
<pmp:MethodOfPaymentCode>07</pmp:MethodOfPaymentCode>
<pmp:TransmissionFormOfRxOriginCode>03</pmp:TransmissionFormOfRxOriginCode>
<pmp:PartialFillIndicator>true</pmp:PartialFillIndicator>
  <pmp:Pharmacist>
  - <nc:PersonName>
    <nc:PersonNamePrefixText>String</nc:PersonNamePrefixText>
    <nc:PersonGivenName>String</nc:PersonGivenName>
    <nc:PersonMiddleName>String</nc:PersonMiddleName>
    <nc:PersonSurName>String</nc:PersonSurName>
    <nc:PersonNameSuffixText>String</nc:PersonNameSuffixText>
    <nc:PersonFullName>String</nc:PersonFullName>
  </nc:PersonName>
  <nc:PersonSexCode>U</nc:PersonSexCode>
```

# Future Prescription Report Schema



- **Added New Code 06 to the code table of TransmissionFormOfRxOriginCode (E):** Add code per ASAP latest version.

```
<pmp:RefillsAuthorizedCount>1</pmp:RefillsAuthorizedCount>  
<pmp:DispensedQuantity>1.1</pmp:DispensedQuantity>  
<pmp:DaysSupplyCount>1</pmp:DaysSupplyCount>  
<pmp:DrugDosageUnitsCode>03</pmp:DrugDosageUnitsCode>  
<pmp:MethodOfPaymentCode>07</pmp:MethodOfPaymentCode>  
<pmp:TransmissionFormOfRxOriginCode>06</pmp:TransmissionFormOfRxOriginCode>
```



- No change made to the schema. Updated to add new codes per the latest ASAP version

# Current Prescription Report Schema



```
- <nc:PersonSSNIentification>
  <nc:IdentificationID>String</nc:IdentificationID>
  <nc:IdentificationJurisdictionText>String</nc:IdentificationJurisdictionText>
</nc:PersonSSNIentification>
- <pmp:PersonPrimaryContactInformation>
  - <nc:ContactTelephoneNumber>
    - <nc:FullTelephoneNumber>
      <nc:TelephoneNumberFullID>String</nc:TelephoneNumberFullID>
    </nc:FullTelephoneNumber>
  </nc:ContactTelephoneNumber>
  - <nc:ContactEntity>
    - <nc:EntityOrganization>
      <nc:OrganizationDoingBusinessAsName>String</nc:OrganizationDoingBusinessAsName>
      - <nc:OrganizationLocation>
        - <nc:LocationAddress>
          - <nc:StructuredAddress>
            - <nc:LocationStreet>
              <nc:StreetFullText>String</nc:StreetFullText>
            </nc:LocationStreet>
            <nc:LocationCityName>String</nc:LocationCityName>
            <nc:LocationStateUSPostalServiceCode>OR</nc:LocationStateUSPostalServiceCode>
            <nc:LocationPostalCode>String</nc:LocationPostalCode>
            <nc:LocationPostalExtensionCode>String</nc:LocationPostalExtensionCode>
          </nc:StructuredAddress>
          </nc:LocationAddress>
        </nc:OrganizationLocation>
        <nc:OrganizationName>String</nc:OrganizationName>
      </nc:EntityOrganization>
    </nc:ContactEntity>
  </pmp:PersonPrimaryContactInformation>
- <pmp:NPIIdentifier>
  <nc:IdentificationID>String</nc:IdentificationID>
  <nc:IdentificationJurisdictionText>String</nc:IdentificationJurisdictionText>
</pmp:NPIIdentifier>
- <pmp:StateLicenseIdentifier>
  <nc:IdentificationID>String</nc:IdentificationID>
  <nc:IdentificationJurisdictionText>String</nc:IdentificationJurisdictionText>
</pmp:StateLicenseIdentifier>
</pmp:Pharmacist>
- <pmp:StateIssuedRxSerialNumberIdentifier>
  <nc:IdentificationID>String</nc:IdentificationID>
  <nc:IdentificationJurisdictionText>String</nc:IdentificationJurisdictionText>
</pmp:StateIssuedRxSerialNumberIdentifier>
</pmp:Prescription>
</pmp:RequestResponsePrescriptionReport>
```

# Future Prescription Report Schema



- ✦ **PrescribedQuantity (A):** Allows the exchange of the quantity prescribed if collected.
- ✦ **RxSIGText (B):** Allows the Prescription instructions to be shared.
- ✦ **ICD-10DiagnosticCodeText (C):** Allows state to share ICD 10 codes associated with the Prescription Record.
- ✦ **Added PersonVendorIdentifier to nc:IdentificationType:** Identifies a person using and ID number provided by a vendor and the vendor which has jurisdiction over the id.
- ✦ **OpioidTreatmentCategoryCode (F):** Allows the exchange of a code to identify the reason for the opioid prescription.

```
</nc:IdentificationJurisdiction>
</pmp:StateIssuedRxSerialNumberIdentification>
<pmp:PrescribedQuantity>5</pmp:PrescribedQuantity>
<pmp:RxSIGText>String</pmp:RxSIGText>
<pmp:ICD-10DiagnosticCodeText>String</pmp:ICD-10DiagnosticCodeText>
<pmp:OpioidTreatmentCategoryCode>11</pmp:OpioidTreatmentCategoryCode>
</pmp:Prescription>
</pmp:RequestResponsePrescriptionReport>
</pmix:PMPPrescriptionReport>
```

The diagram illustrates the mapping of key schema elements to their functional descriptions. Yellow boxes labeled A, B, C, and F are connected by lines to the corresponding XML elements in the code block above. Box A points to the quantity element, B points to the RxSIGText element, C points to the ICD-10DiagnosticCodeText element, and F points to the OpioidTreatmentCategoryCode element.

# Required Fields



- **nc:JurisdictionUSPostalServiceCode** – Identifies State in any segment
- **Header information identifying the schema**
  - **pmp:VersionReleaseNumberText** –
  - **pmp:TransactionControlNumberText** – ID for response
  - **pmp:ReportExecutionDate** – Date of response
  - **pmp:ReportExecutionTime** – Time of response
  - **pmp:FileTypeCode**
  - **pmp:UniqueInformationSourceIDText**
  - **pmp:InformationSourceEntityNameText**
  - **pmp:ReportingStatusCode**

# Required Fields



- **Rx Field for All Drugs - Field – ASAP Field (ASAP Status)**
  - pmp:PrescriptionNumberText - DSP02 Prescription Number (Required)
  - pmp:PrescriptionWrittenDate - DSP03 Date Written (Required)
  - pmp:DrugProductIdentifier – DSP08 Product ID (Required)
  - pmp:RefillsAuthorizedCount – DSP04 Refills Authorized (Required)
  - pmp:PrescriptionFilledDate – DSP05 Date Filled (Required)
  - pmp:DrugRefillNumberCount – DSP06 Fill Number (Required)
  - pmp:DispensedQuantity – DSP09 Quantity Dispensed (Required)
  - pmp:DaysSupplyCount – DSP10 Days Supply (Required)
  - **pmp:DEANumberIdentifier** *\*\*This is conditionally required if the drug is a controlled substance*

# Required Fields



- **Rx Fields for Compound Drugs- Field – ASAP Field (ASAP Status)**
  - pmp:CompoundDrugIngredientProductIdentifier – CDIo2 Product ID Qualifier (Required)
  - pmp:CompoundDrugIngredientSequenceNumber – CDIo3 Product ID (Required)
  - pmp:IngredientQuantity – CDIo4 Compound Ingredient Quantity- Field (Required)

# Metadata Schema



- Adding an Alternate MetaData Schema based on PMP Gateway logs/transaction information
- Allows states send and receive additional data in the transaction
- This is an optional schema



# Metadata Schema Data Elements



- **Current Metadata**

<b>Current PMIX Metadata Elements</b>
<b>Requestor</b>
<b>User Role</b>
<b>Disclosing State</b>
<b>Request ID</b>
<b>Requesting State</b>

- **Alternate MetaData**

<b>Alternate PMIX Metadata Elements</b>
<b>Requestor Last Name</b>
<b>Requestor First Name</b>
<b>Requestor ID Type</b>
<b>Requestor ID</b>
<b>Requestor Organization</b>
<b>Requestor Facility</b>
<b>Facility ID Type</b>
<b>Facility ID</b>
<b>Date/Time of Request from Originating System</b>
<b>Hub Search ID</b>
<b>Hub Disclosure ID</b>

# Current Metadata Schema



```
<?xml version="1.0" encoding="UTF-8"?>
<!--Sample XML file generated by XMLSpy v2011 rel. 3 (http://www.altova.com)-->
- <tns:MetaData xmlns:xsi="http://www.w3.org/2001/XMLSchema-instance" xmlns:tns="http://www.pmix.gov" xsi:sche
  <tns:Requestor>String</tns:Requestor>
  <tns:RequestorRole>Examiner</tns:RequestorRole>
  <tns:RoutingData>
    <tns:DisclosingState>String</tns:DisclosingState>
    <tns:RequestID>String</tns:RequestID>
    <tns:RequestingState>String</tns:RequestingState>
  </tns:RoutingData>
</tns:MetaData>
```

# Alternate Metadata Schema

```
<?xml version="1.0" encoding="UTF-8"?> <!--Sample XML file generated by XMLSpy v2011 rel. 3
(http://www.altova.com)-->
<tns:MetaData xmlns:xsi="http://www.w3.org/2001/XMLSchema-instance" xsi:schemaLocation="http://www.pmix.gov PMIX_Service.Enhanced.0.xsd"
xmlns:tns="http://www.pmix.gov/enhanced" xmlns:xsi="http://www.w3.org/2001/XMLSchema-instance">
<tns:Requestor>
  <tns:RequestorRole>Examiner</tns:RequestorRole>
  <tns:RequestorGivenName>String</tns:RequestorGivenName>
  <tns:RequestorSurName>String</tns:RequestorSurName>
  <tns:RequestorIdentification>
    <tns:IdentificationID>String</tns:IdentificationID>
    <tns:IdentificationCategoryCode>DEA</tns:IdentificationCategoryCode>
  </tns:RequestorIdentification>
  <tns:RequestorIdentification>
    <tns:IdentificationID>String</tns:IdentificationID>
    <tns:IdentificationCategoryCode>NPI</tns:IdentificationCategoryCode>
  </tns:RequestorIdentification>
  <tns:RequestorIdentification>
    <tns:IdentificationID>String</tns:IdentificationID>
    <tns:IdentificationCategoryCode>State License</tns:IdentificationCategoryCode>
  </tns:RequestorIdentification>
  <tns:RequestorIdentification>
    <tns:IdentificationID>String</tns:IdentificationID>
    <tns:IdentificationCategoryCode>Other</tns:IdentificationCategoryCode>
  </tns:RequestorIdentification>
  <tns:RequestorFacility>
    <tns:RequestorOrganizationName>String</tns:RequestorOrganizationName>
    <tns:FacilityIdentification>
      <tns:IdentificationID>String</tns:IdentificationID>
      <tns:IdentificationCategoryCode>DEA</tns:IdentificationCategoryCode>
    </tns:FacilityIdentification>
    <tns:FacilityIdentification>
      <tns:IdentificationID>String</tns:IdentificationID>
      <tns:IdentificationCategoryCode>NPI</tns:IdentificationCategoryCode>
    </tns:FacilityIdentification>
    <tns:FacilityIdentification>
      <tns:IdentificationID>String</tns:IdentificationID>
      <tns:IdentificationCategoryCode>State License</tns:IdentificationCategoryCode>
    </tns:FacilityIdentification>
    <tns:FacilityIdentification>
      <tns:IdentificationID>String</tns:IdentificationID>
      <tns:IdentificationCategoryCode>Other</tns:IdentificationCategoryCode>
    </tns:FacilityIdentification>
  </tns:RequestorFacility>
</tns:Requestor>
</tns:MetaData>
```

# Alternate Metadata Schema continued

```
</tns:Requestor>
  <tns:RequestorOrganization>
    <tns:RequestorOrganizationName>String</tns:RequestorOrganizationName>
    <tns:FacilityIdentification>
      <tns:IdentificationID>String</tns:IdentificationID>
      <tns:IdentificationCategoryCode>DEA</tns:IdentificationCategoryCode>
    </tns:FacilityIdentification>
    <tns:FacilityIdentification>
      <tns:IdentificationID>String</tns:IdentificationID>
      <tns:IdentificationCategoryCode>NPI</tns:IdentificationCategoryCode>
    </tns:FacilityIdentification>
    <tns:FacilityIdentification>
      <tns:IdentificationID>String</tns:IdentificationID>
      <tns:IdentificationCategoryCode>State License</tns:IdentificationCategoryCode>
    </tns:FacilityIdentification>
    <tns:FacilityIdentification>
      <tns:IdentificationID>String</tns:IdentificationID>
      <tns:IdentificationCategoryCode>Other</tns:IdentificationCategoryCode>
    </tns:FacilityIdentification>
  </tns:RequestorOrganization>
<tns:RoutingData>
  <tns:RequestID>String</tns:RequestID>
  <tns:RequestDateTime>2019-05-01T09:30:00.123Z</tns:RequestDateTime>
  <tns:RequestingState>String</tns:RequestingState>
  <tns:StateRequestID>String</tns:StateRequestID>
  <tns:DisclosingState>String</tns:DisclosingState>
  <tns:StateDisclosureID>String</tns:StateDisclosureID>
  <tns:HubRequestID>String</tns:HubRequestID>
  <tns:HubDisclosureID>String</tns:HubDisclosureID>
  <tns:HubUsedIdentification>
    <tns:HubIdentificationID>String</tns:HubIdentificationID>
    <tns:HubIdentificationCode>RxCheck</tns:HubIdentificationCode>
    <!-- <tns:HubIdentificationCode>PMPi</tns:HubIdentificationCode> -->
  </tns:HubUsedIdentification>
</tns:RoutingData>
</tns:MetaData>
```

thank  
thank  
you!

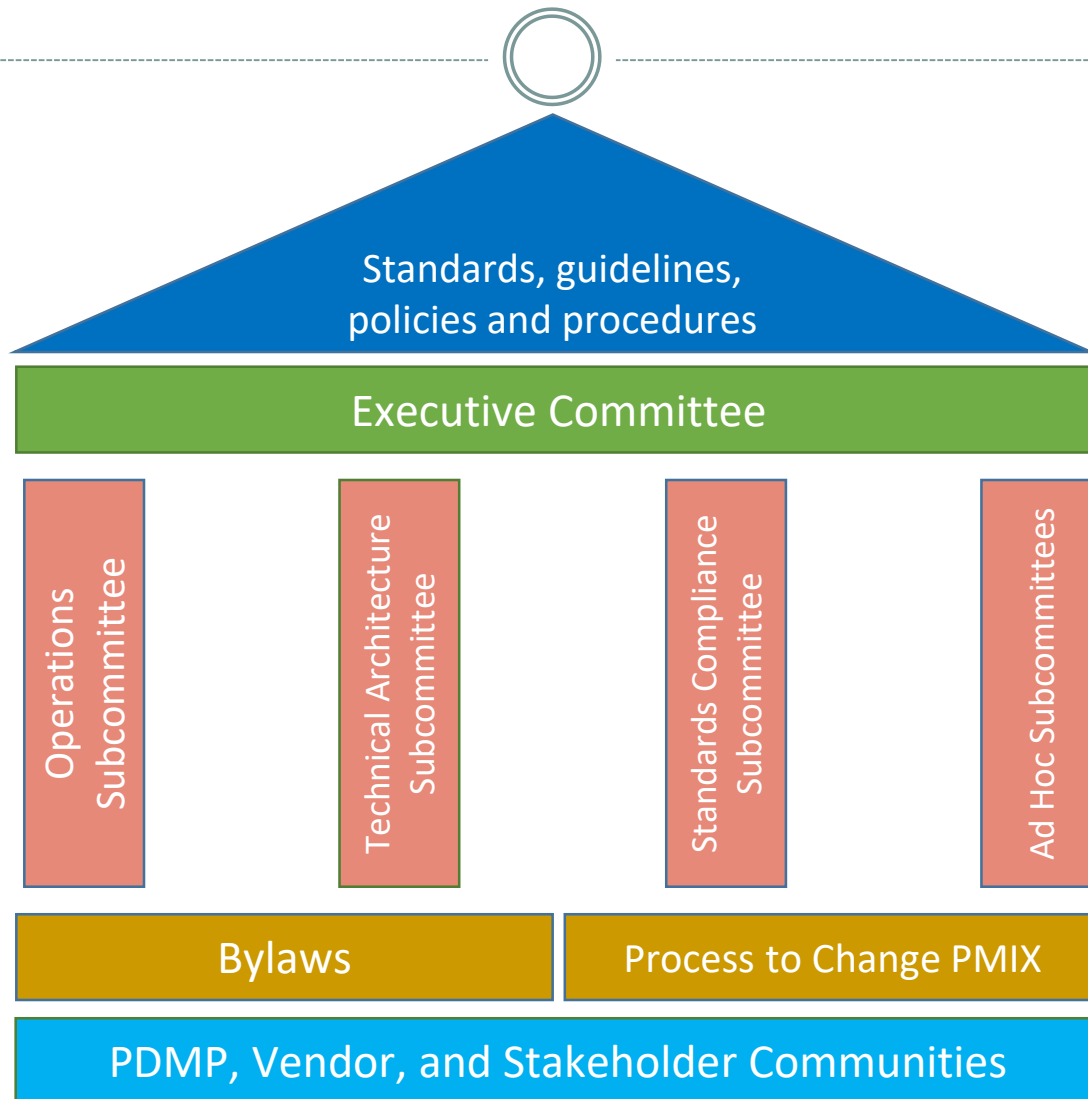
# Process to Change the Architecture



- Proposal is reviewed by the Executive Committee and referred to subcommittee if reasonable
- Subcommittee reviews and amends in consultation with other subcommittees
- Subcommittee votes to recommend or not recommend proposed change to Exec Committee
- Exec Committee votes to post proposal for comments allowing a 15 to 30 days period \*
- Exec Committee provides written response to all comments in a manner viewable by all PDMP organizations
- Exec Committee votes to:
  - Approve
  - Amend and approve
  - Deny
- If approved, the proposal shall be implemented on a defined implementation date
- If denied, the proposal may be returned to subcommittees for further consideration

*\* Must include a description of the change, the reason for the change, instructions for review and comment and anticipated date of implementation*

# Structure of the PMIX Standards Organization



# Officers



- Chairperson – Jean Hall (KY)
- Vice-Chairperson – Chad Garner (OH)
- Secretary – Stan Murzynski (PA)
- Standing Committee Chairpersons
  - Operations – Kevin Borchert (NE)
  - Technical Architecture – Ron Larsen (UT)
  - Standards Compliance – Chad Garner (OH)



# Executive Committee Members

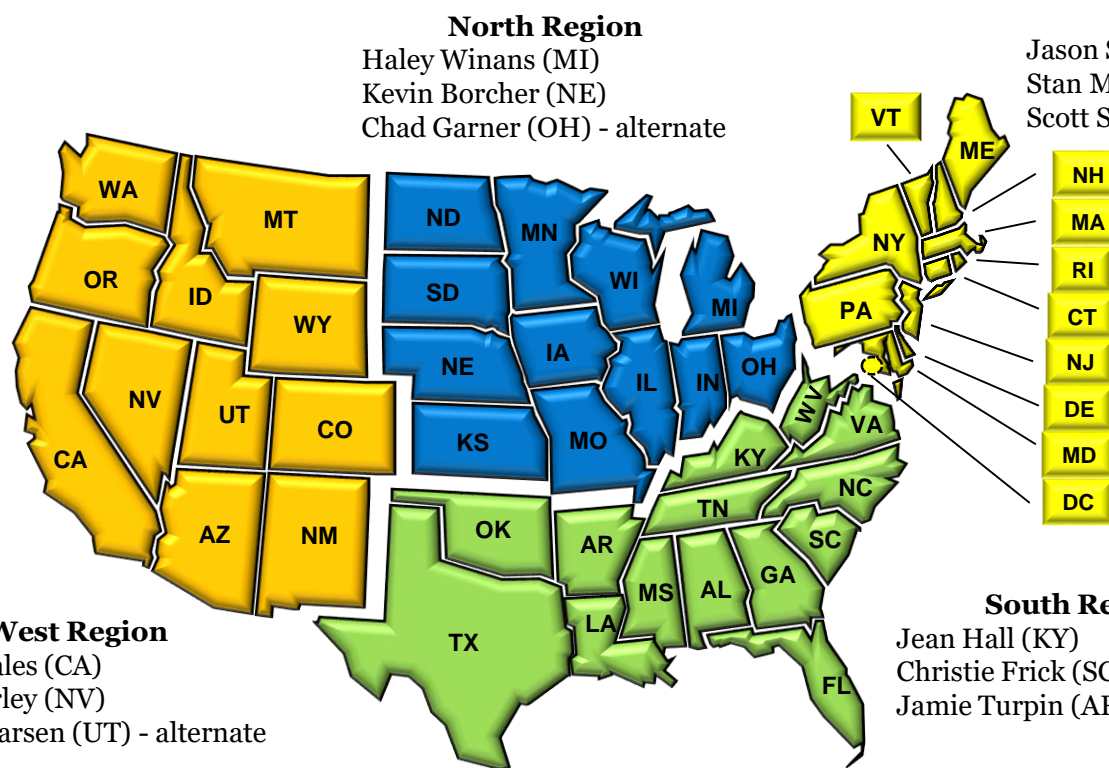


## North Region

Haley Winans (MI)  
Kevin Borchert (NE)  
Chad Garner (OH) - alternate

## East Region

Jason Slavoski (DE)  
Stan Murzynski (PA)  
Scott Szalkiewicz (CT) - alternate



## West Region

Tina Farales (CA)  
Darla Zarley (NV)  
Ronald Larsen (UT) - alternate

## South Region

Jean Hall (KY)  
Christie Frick (SC)  
Jamie Turpin (AR) - alternate



# Operations Subcommittee



- The Operations Subcommittee shall address business issues impacting the exchange of information between PDMPs and the development and maintenance of the operations of the PMIX Architecture. In addition, the Operations Subcommittee will address operational behaviors, policies and standards necessary to promote consistency across state PDMPs by proposing such artifacts to the Executive Committee for adoption.

# Operations Subcommittee Members



## Prescription Drug Monitoring Programs

California – Tina Farales  
Delaware – Jason Slavoski  
Florida – Erika Marshall  
Georgia – Amy Benson  
Kentucky – Jean Hall  
Maine – Jennifer Marlowe  
Nebraska – Kevin Borchert  
New York – Joshua Vinciguerra, Kimberly Leonard, Dave Flashover  
Washington – Sasha DeLeon, Matthew Reid, Eric Grace



## Vendor Community

Appriss – Sheila Sullivan  
BizTek – Denise Robertson  
NIC – Kevin Schmidt  
OpiSafe – Colin Benjamin  
Scripulate – Neil Chatterjee



## Other State/Federal Government

CDC – Wesley Sargent  
ONC – Carmen Smiley



## Other Stakeholders

NABP – Danna Droz  
Sherry Green & Associates – Sherry Green



*\* Support provided by TTAC*

# Technical Architecture Subcommittee



- The Technical Architecture Subcommittee shall be responsible for the development and maintenance of the technical aspects of the PMIX Architecture as well as technical behaviors, policies and standards necessary to promote consistency across state PDMPs by proposing such artifacts to the Executive Committee for adoption.

# Technical Architecture Subcommittee Members



## Prescription Drug Monitoring Programs

- California – Tina Farales
- Georgia – Shari Ramchal
- Kentucky – Jean Hall, Julio Mendoza
- Maine – Jennifer Marlowe
- Massachusetts – Rodd Kelly
- Nebraska – Naresh Sundar Rajan
- North Carolina – Depris Price
- Ohio – Chad Garner
- Pennsylvania – Stan Murzynski
- Utah – Ronald Larsen, Destiny Calvano
- Washington – Matthew Reid, Eric Grace



## Vendor Community

- Appriss – Clay Rogers
- BizTek – Diwakar Cherukumilli
- Carradora – Mike Flanigan
- IJIS Institute – Robert May
- Logicoy – Fred Aabedi
- NIC – Kevin Schmidt
- OpiSafe – Chris Ennis
- PastRx – Robert Cassidy



## Other State/Federal Government



## Other Stakeholders

- Carlson Consulting – Tom Carlson



*\* Support provided by TTAC*

# Standards Compliance Subcommittee



- The Standards Compliance Subcommittee conducts reviews and makes recommendations on compliance to the PMIX standards as well as waivers and plans of action for organizations seeking to certify compliance.

# Standards Compliance Subcommittee Members



## Prescription Drug Monitoring Programs

Kentucky – Jean Hall  
Massachusetts – Natasha Colvin  
Ohio – Chad Garner  
Utah – Sam Albornoz



## Vendor Community



## Other State/Federal Government

OJP – Peter Nguyen, Abid Rizvi



## Other Stakeholders



*\* Support provided by TTAC*

# Goals



GOAL	Executive	Operations	Technical	Standards Compliance
Identify functionality for data sharing hubs		1st	2nd	3rd
Creating a minimum standard of functionality of a PDMP; promote consistency among PDMPs; review NAMSDL and/or NASCSA model act as starting point;	1st - in conjunction with TTAC initiative - will address PMIX actions when identified.			
Explore best practices in EHR integration/interstate data sharing queries		1st	1st	
Explore engage pharmacy partners to improve data on front end	1st	2nd		
Hub to Hub Interoperability - Document the previous work that proved the feasibility of hub-to-hub interoperability. Consider whether this should be a standard.		2nd	1st	
Promotion and education of PMIX organization and its work	1st			
Multi-state health system rules sets in different states; explain challenges/opportunities		1st	2nd	
Guidelines for problem resolution	1st			